



AutoMan™

*Automation Power Tools
for z/OS and OS/390*

Solution Overview

AutoMan overcomes the limitations of human operators by providing a complete set of automation power tools for any z/OS or OS/390 standalone or sysplex system. Robust modular components deliver comprehensive systems management, job scheduling, monitoring, and control of both system and application processes. As an integrated tool, AutoMan saves time, minimizes errors, and reduces staff requirements in overworked data centers.

GAL (Generalized Automation Language): A simple, high-level scripting language custom designed for automation. GAL scripts tend to be substantially easier to write and maintain than comparable scripts using non-system specific languages such as REXX. GAL includes complex date functions for precise and flexible event scheduling supporting multiple Gregorian and non-Gregorian calendars (lunar, lunisolar, etc.) and complex date relationships, for example “the first Wednesday before Easter,” or “the second Thursday of any month.”

GALCOMP: The built-in compiler for the GAL scripting language speeds up loading and execution times while reducing errors through unalterable code.

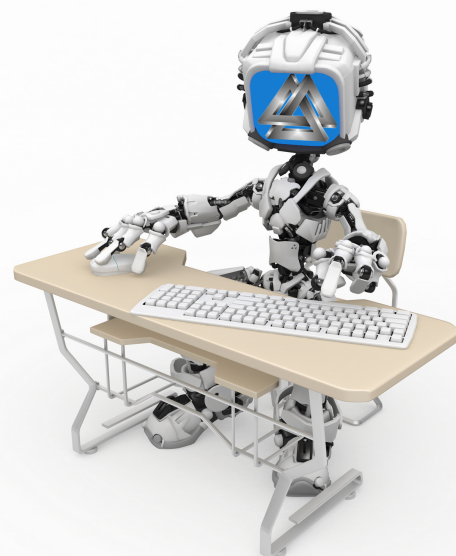
AutoMate: An array of TSO User Panels that parse system and application logs to automatically generate GAL scripts, effectively eliminating 90% of the manual scripting typically required with other system automation tools. Using AutoMate, simply tell AutoMan what you wish to accomplish and it outputs error-free GAL code. Modify the resulting code further, or compile it using GALCOMP.

Available as sequel versions, AutoMan allows you to implement only the features you need when you need them, reducing your costs. Visit the Exspans web site to download a free trial version of AutoMan.

Problems Addressed by This Solution

Data center workers often encounter severe work-related stress and fatigue, even when dealing with routine or repetitive tasks. This stress may manifest itself in a variety of health-related issues as well as decreased job performance. A recent report by American Power Conversion Corp. highlights the consequences of this stress, noting that “employees will take shortcuts, or lose concentration resulting in personal injury” and “catastrophic human errors.”

Over a prolonged time, such stress will contribute to lost or corrupt data, system downtime, employee burnout, and high rates of employee turnover. By simplifying complex actions and automating repetitive processes, AutoMan helps to reduce job-related stress and incidents of human error, increase employee satisfaction, and improve workforce productivity, resulting in immediate and substantial return-on-investment.



*AutoMan is your Operations Robot: Tell it what to do,
and it tirelessly and unerringly follows your instructions.*

Business Opportunities Created by This Solution

By reducing errors and increasing efficiency, AutoMan contributes directly to your organization's bottom line.

Increased Productivity: Easy to install and based around a familiar and intuitive interface, AutoMan allows your data center staff to be immediately productive. AutoMate eliminates 90% of the manual coding required by other automation systems.

Reduced Error Incidents: AutoMan's GAL scripting language and GALCOMP compiler simplify and standardize repetitive processes such as backups and scheduled maintenance, while streamlining exceptional events such as disaster recovery. AutoMate produces flexible yet error-free GAL scripts directly from system and application logs, fully adapted to system demands.

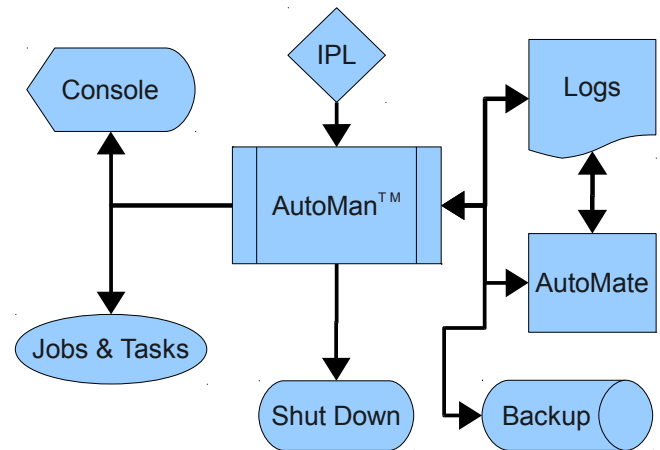
Reduced Staff Burnout and Stress: Tedious, repetitive actions have been shown to contribute to work-related stress and employee burnout. By assuming that load, AutoMan frees your data center staff to focus on more interesting and challenging functions, increasing efficiency and improving job satisfaction.

Increased Efficiency: Manual intervention in startup, shutdown, and job transitions takes valuable time and wastes processor cycles. AutoMan reduces these costs by responding immediately and predictably to system events.

Cost Management: All-in-one utilities typically force you to pay for unused functionality. In contrast, AutoMan's modular nature and sequel versioning allows you to implement -- and pay for -- only the features you need.

Industries of Specialization

AutoMan is designed to perform well in any large-volume data center and is particularly adapted to small and medium-sized organizations in the education, healthcare, and public service / non-profit sectors. As a robust tool with a proven track-record, AutoMan is also at home in travel, transportation, government, insurance, and banking and finance institutions.



AutoMan's robust set of system automation tools let you control every aspect of your system from IPL to shutdown and all points between.

Exspans Overview

Exspans provides high quality, easy to use, and cost effective IBM z/OS and OS/390 system automation solutions and enabling tools for small and medium-sized organizations across North America and Europe. Our founders have been developing and supporting software for IBM mainframe customers since the early 1970s.

Exspans is an IBM Business Partner and Partner in Development, and a member of IBM's ISV Partnership Program.

RPO 20082, Perth Mews
Perth, Ontario K7H 3M6
Canada

Exspans Systems Inc.

1-613-268-2057
info@exspans.com
www.exspans.com